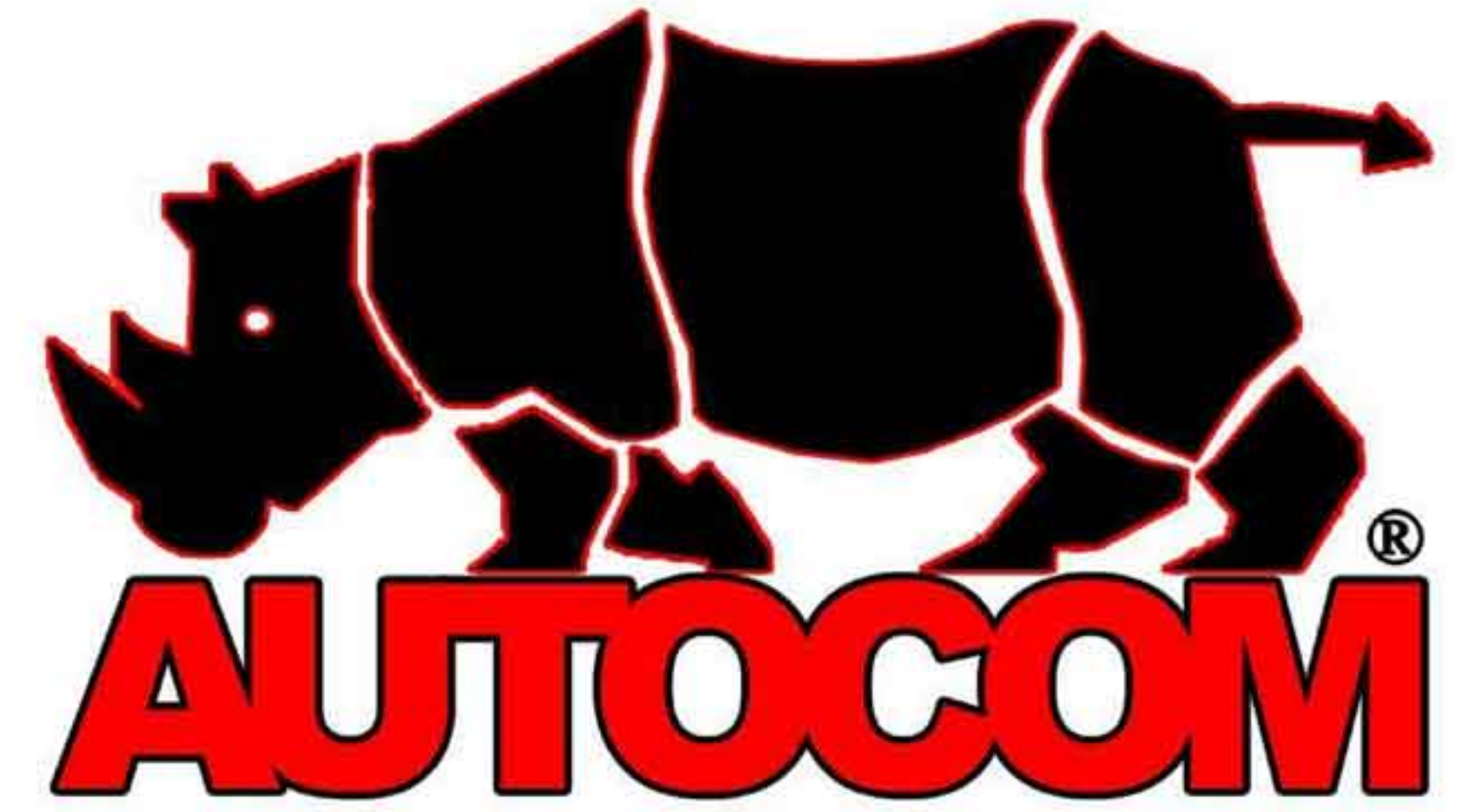
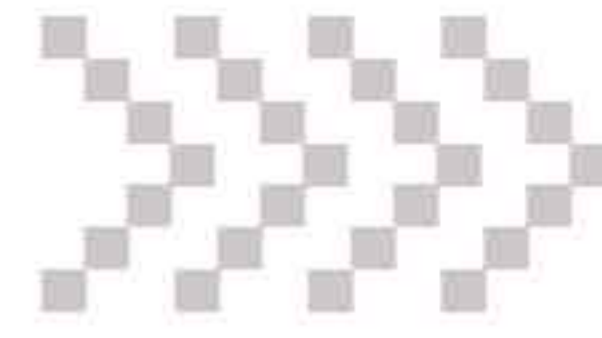


# Truck Crane



Truck mounted crane in capacities from 0.5 ton to 10 tons. Various end connection options available, such as standard crane hook, auger, grab crane, etc.

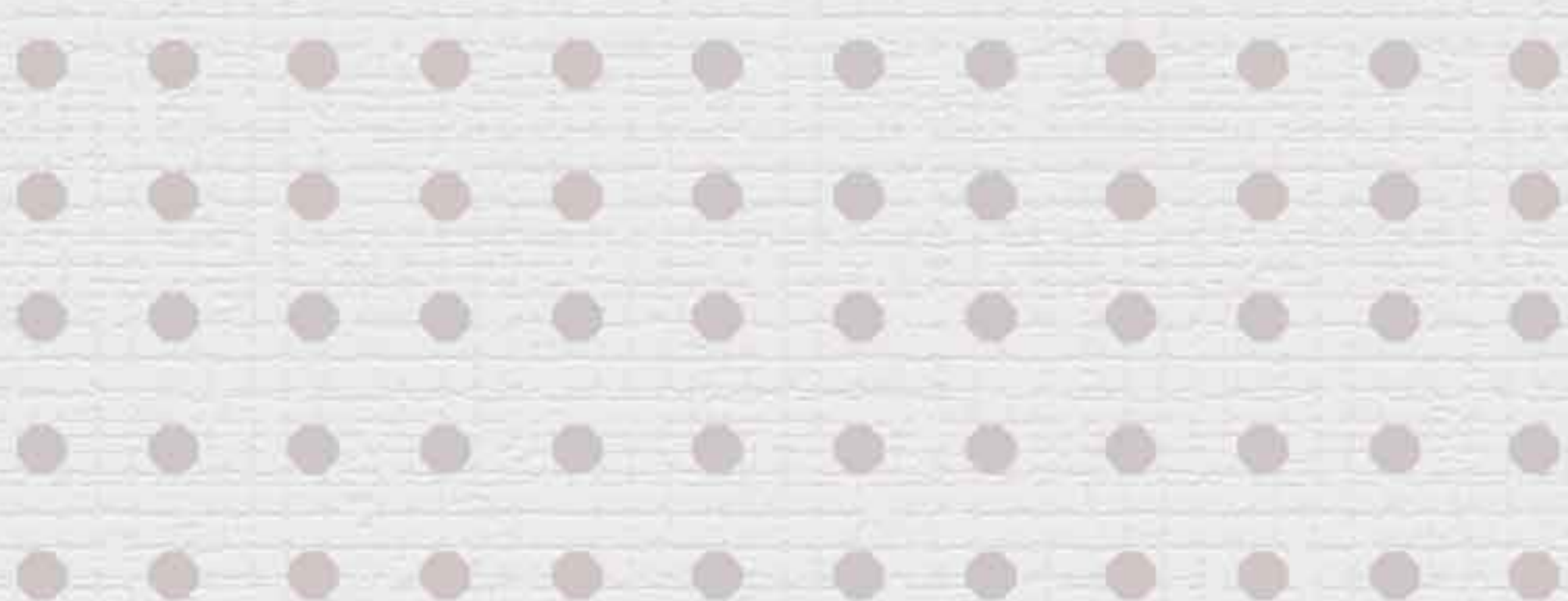


*Automobile Corporation of Pakistan*



## Product Profile

Hydraulically Operated Truck Crane . Best Quality, Long Lasting, Trouble Free Operation.





Automobile Corporation of Pakistan



Truck Crane



## SALIENT FEATURES

Capacity	0.5 to 10 tons	Stablizer	2 or 4 as per requirement
Maximum Working Height	10 to 30m	End Connection	Standard hook
Maximum Horizontal Outreach	5 to 20m	Drive	Truck PTO
Boom/Extension	2-5	Control	on the truck or remote unit(optional)
Turning	360°	Protection	Overload protection load indicator



**Automobile Corporation of Pakistan**

14-Dockyard Road, West Wharf, Karachi, Pakistan, Phone: +922132205240 Fax: +922132310629

Web: [www.acpl.com.pk](http://www.acpl.com.pk) Email: [contact@acpl.com.pk](mailto:contact@acpl.com.pk) [www.facebook.com/autocom](https://www.facebook.com/autocom)